

AXPOLY®

PP24 1000 Polypropylene resin grade - natural colour

Description:

Axpoly® PP24 1000 is a natural colour homopolymer Polypropylene resin suitable for a wide range of high quality applications where surface finish is of high importance. Starting from this natural -colour material, Axion can prepare colour-matched test plaques to exactly meet individual customer requirements. Out trained Polymer Colourist can prepare samples to meet an industry specified RAL or Pantone colour number, or simply match supplied benchmark products.

Source:

Axpoly® PP24 resins are produced from post-industrial waste feedstocks. These are processed through a sophisticated cleaning process prior to final compounding and pellet production. All production batches are traceable back to the origin of the raw material as part of the certified manufacturing process.

Quality Control:

Every tonne of every batch is made under our strict ISO9001 QC system to ensure that customers are confident about the reliable and consistent performance of the polymer during thermoforming and moulding operations. The polymer physical properties shown opposite can be repeated or modified to satisfy individual customer requirements in a tailor made resin grade.

Environment:

Produced from post-consumer or post industrial raw materials, this product fits closely with our other Axpoly® recycled resin grades and offers the same set of user benefits, including:

- Successfully replaces virgin resin
- Huge savings in CO₂ impact - at least 80%
- Appeals to 'greener' customers
- Cost-down on raw material
- Saves the Planet!

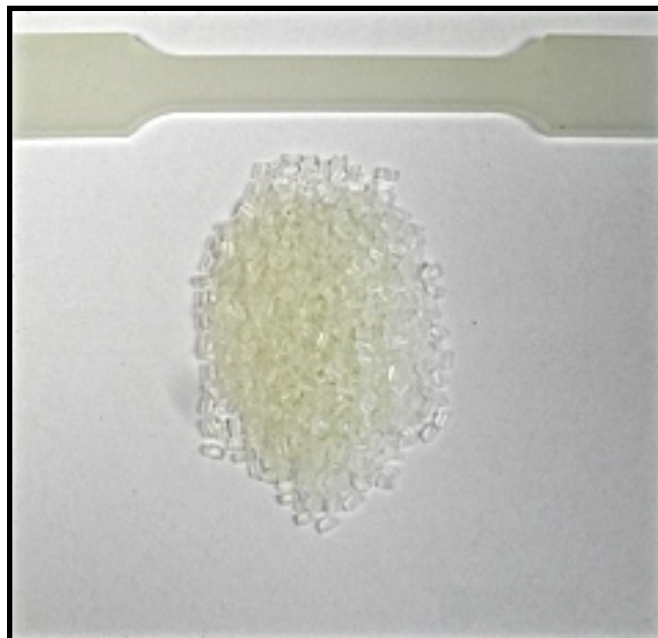
Axpoly® is available in 1 tonne polyester big bags on a pallet, other formats possible on request.

Axion Polymers

Langley Road South, Salford, M6 6HQ

Telephone: (+44) 161 737 6124

Email: info@axionpolymers.com



PARAMETER	ISO	SPEC		TYPICAL PROPERTIES
		Min	Max	
MFI (2.16 kg @ 230°C)	1133	25	45	35 g / 10 mins
Density	1183-1	0.92	1.00	0.93 g / cm ³
Tensile Strength	527 -1/2	20	40	30 MPa
Impact Strength	180	3	7	5 kj / m ²
Moisture Content	%	<0.25%		0.17%
Pellet Size	mm	2mm	4mm	3mm

Notes: All grades are assessed to ISO Standards and are REACH ready.

